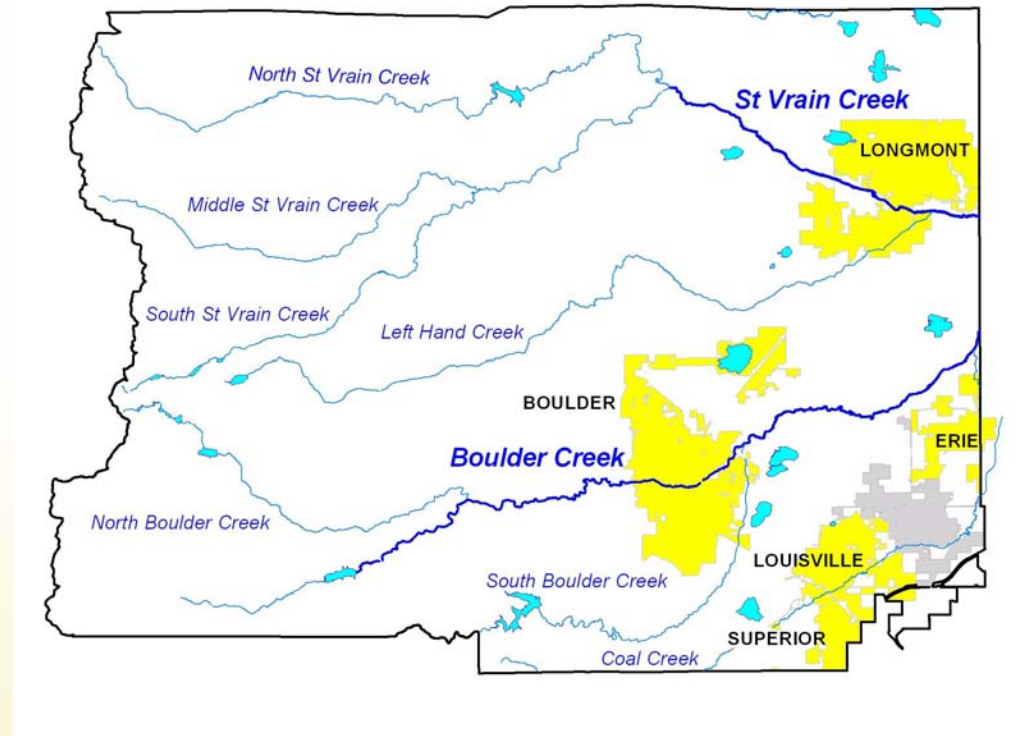


# Homeowner's Stormwater Protection Practices



# KICP is a Regional Partnership

- Boulder County
- City of Boulder
- Town of Erie
- City of Longmont
- City of Louisville
- Town of Superior



# The EPA, CDPHE, and Stormwater

- The Clean Water Act (1972) regulates the discharge of pollutants from “point sources”
  - Stormwater included in 1987 amendments
- Phase I (1990)
  - MS4s with population greater than 100,000
- Phase II (1999)
  - MS4s with population less than 100,000
- In Colorado, CDPHE administers the NPDES program (called CDPS)



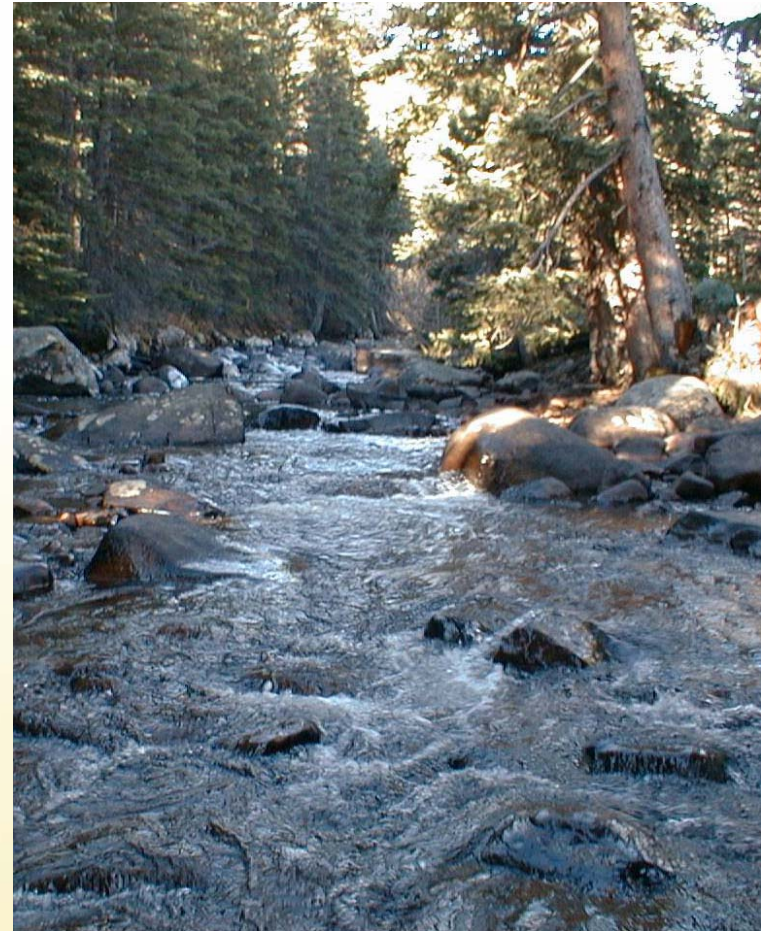
# What is Stormwater?

Runoff from rain and snowmelt flow over urban surfaces and carry pollutants to the **nearest stream.**



# Why is Protecting Stormwater Necessary?

Polluted runoff is the number one cause of water pollution in the United States today.



# Why is Protecting Stormwater Necessary?

We all depend on clean water in our creeks for a variety of reasons.



# Why is Protecting Stormwater Necessary?

Pollutants can impair aquatic ecosystems and impact drinking water sources.



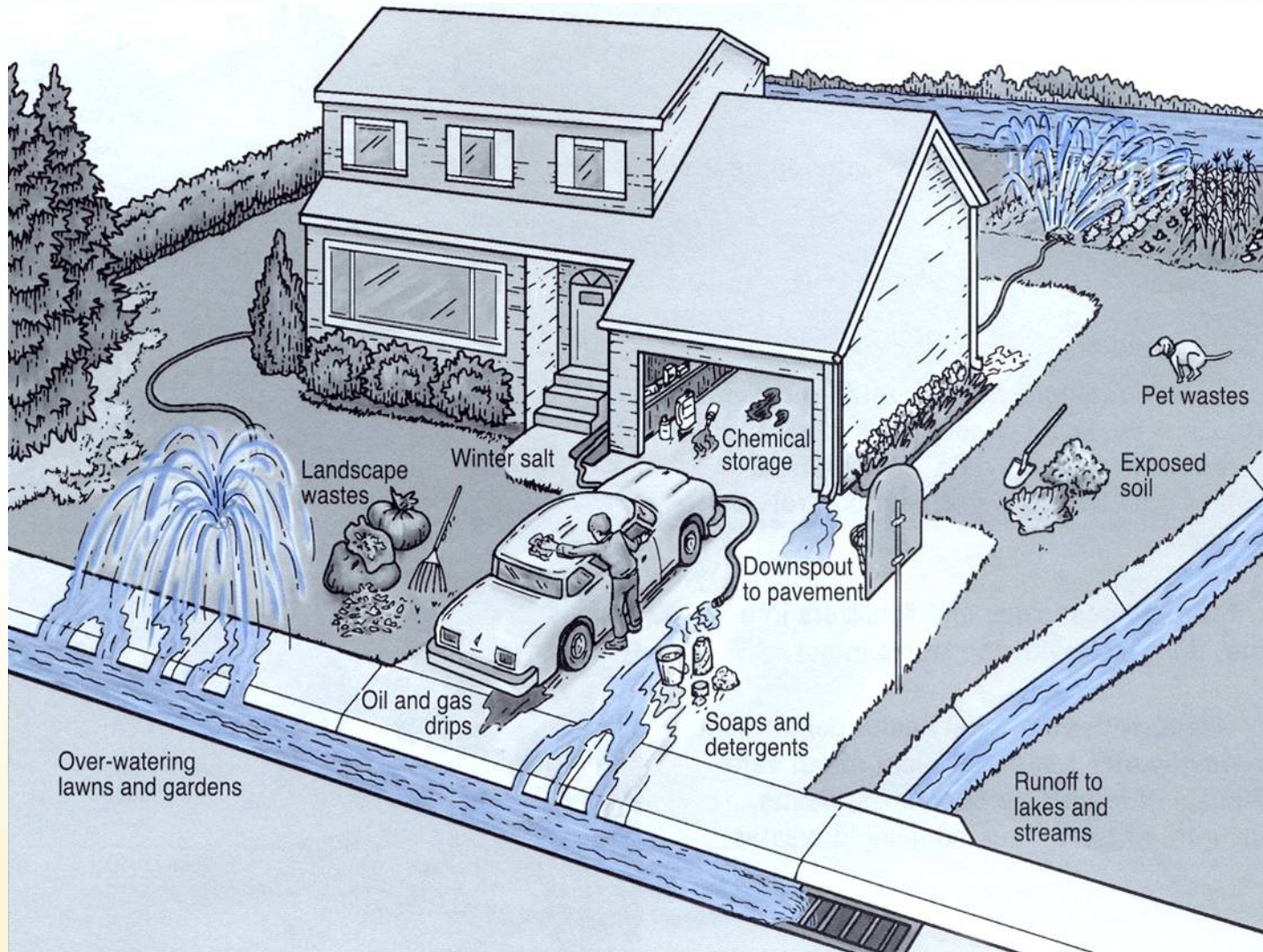
# Why is Protecting Stormwater Necessary?

**Any discharge to the storm drainage system that is not composed entirely of stormwater is illegal.**





# Everyday Activities Can Effect Stormwater



# Everyday Activities Can Effect Stormwater



# Locate Your Nearest Storm Drain



**Be sure you know where the link to the local stream is from your home.**



# Facility Management

## The areas that need attention are:

- Dumpster Areas
- HVAC Equipment Maintenance
- Grounds Keeping
- Spill Response
- Fire Suppression System
- Storm Drain System Cleaning
- Permanent Storm Drainage BMPs
- Surface Cleaning
- Contractors



# Grounds Keeping

- ✓ Maintain sprinkler system - so as not to over water.
- ✓ Reduce use of pesticides and fertilizers and do not apply before or after it rains.
- ✓ Keep fertilizer off of paved surfaces—off of sidewalks, driveways, etc. If granular fertilizer gets onto paved surfaces, collect it for later use or sweep it onto the lawn.



# Grounds Keeping

- ✓ Shovel sidewalks and pathways to keep them clear and to prevent ice from forming.
- ✓ Apply de-icing products discriminately, focusing on high use areas and slopes where traction is critical. Apply the least amount necessary to get the job done.



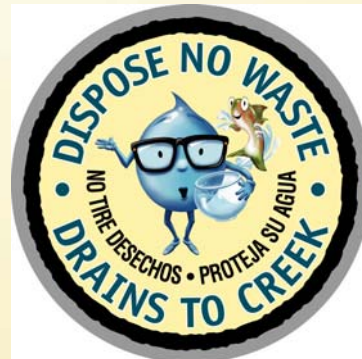
# Grounds Keeping

**Over 70 percent of water goes to landscape and lawn irrigation during the summer!**



# Storm Drain System

- ✓ Keep storm drains free of litter and debris. Do not rake or dump grass clippings or leaves into the storm drainage system.
- ✓ Be sure solids are removed and disposed of so liquid does not re-enter drainage system.
- ✓ Set a maintenance frequency.





# Contract Language

## Property and business owners are responsible for their contractors' practices.

Contract language to consider:

“Stormwater runoff flows directly to creeks and waters of the state without treatment. Allowing pollutants to directly or indirectly enter the storm sewer system is prohibited by federal, state and local regulations. The maintenance of facilities can cause stormwater pollution in numerous ways. For example, stormwater pollution can be caused by wastes from street or equipment cleaning, improper storage of products or wastes, or inadequate clean up of leftover or spilled products of wastes. These pollutants can either enter storm drains directly or be transported by stormwater runoff.

The Contractor shall take all measures necessary to prevent pollutants from entering storm drains of watercourses. For the purpose of eliminating stormwater pollution, the contractor shall implement effective Best Management Practices (BMPs). BMPs include general good housekeeping practices, appropriate scheduling of activities, operational practices, maintenance procedures and other measures to prevent the discharge of pollutants directly or indirectly to the storm drain system. These BMPs shall be maintained for the duration of the Contractor's work. The Contractor shall also be responsible for proper disposal of all waste materials, including wastes generated by the implementation of BMPs. Contractors must go to [www.pacepartners.com](http://www.pacepartners.com) for the applicable BMPs.



# Permanent Storm Drainage System BMPs

- ✓ Develop an inspection and maintenance plan (for both short and long term maintenance).
- ✓ Inspect BMPs with checklists derived from Urban Drainage recommendations and available from KICP website or provided by your community.
- ✓ Keep BMPs free of litter and debris.
- ✓ Be sure solids are removed and disposed of so liquid does not re-enter drainage system.



# BMP Maintenance Recommendations

## BMP INSPECTION CHECKLISTS

(can be found in Urban Drainage and Flood Control District, Vol. 3

[http://www.udfcd.org/downloads/down\\_critmanual.htm](http://www.udfcd.org/downloads/down_critmanual.htm))

- Irrigated grass buffer strips
- Grass-lined swale
- Modular block porous pavement
- Porous pavement detention
- Porous landscape detention
- Extended detention basin
- Sand filter extended detention basin
- Constructed wetland basin
- Retention pond basin
- Constructed wetland channel



# Permanent Storm Drainage System BMPs



# Reporting Numbers for Non-Emergency Stormwater Discharges

## **City of Boulder**

Stormwater Quality: 303-413-7350

## **City of Longmont**

Dispatch: 303-651-8501

## **City of Louisville**

Ken Mason: 720-363-9071

## **Town of Erie**

Public Works: 303-926-2880

## **Town of Superior**

Kurt Kowar: 303-499-3675

## **Un-incorporated Boulder County**

Boulder County Public Health Environmental Health:  
303-441-1564



# Spread the word to Keep it Clean

***Community members are the principal stewards of our water quality!***

- ✓ Provide information in HOA newsletter
- ✓ Become a Neighborhood StreamTeam



# Get Involved

## Get to Know Your H<sub>2</sub>O!

We offer speakers knowledgeable on a variety of water-related subjects who are available to present at your next meeting or conference.

### Learn more about:

- Where our water comes from, and where it goes after we use it
- Water quality parameters and stream health
- How natural and human factors affect water quality in the Boulder Creek and St. Vrain Creek watersheds
- Simple ways to conserve water both indoors and out

IT'S EASY!



There are many fun ways you can get involved! To sign up, call us today at  
**303-413-7365**



## KEEP IT CLEAN PARTNERSHIP

Communities in the Boulder and St. Vrain watersheds working together to protect our water quality.

**BOULDER • BOULDER COUNTY • ERIE  
LONGMONT • LOUISVILLE • SUPERIOR**  
303-441-1438 • [KeepItCleanPartnership.org](http://KeepItCleanPartnership.org)

## Get involved with your...

# H<sub>2</sub>O



IT'S FUN!



# KICP Partner Contacts

## Boulder County

Dave Webster    720-564-2660    [dwebster@bouldercounty.org](mailto:dwebster@bouldercounty.org)

## City of Boulder

Donna Scott    303-413-7364    [scottd@bouldercolorado.gov](mailto:scottd@bouldercolorado.gov)

## Erie

Wendi Palmer    303-926-2875    [wpalmer@ci.erie.co.us](mailto:wpalmer@ci.erie.co.us)

## Longmont

Cal Youngberg    303-651-8399    [cal.youngberg@ci.longmont.co.us](mailto:cal.youngberg@ci.longmont.co.us)

## Louisville

Ken Mason    303-335-4780    [masonk@ci.louisville.co.us](mailto:masonk@ci.louisville.co.us)

## Superior

Kurt Kowar    303-499-3675    [kurtk@townofsuperior.com](mailto:kurtk@townofsuperior.com)

